

# **ECAS Reveals High Prevalence of Anemia in Patients with Hematologic Malignancies**

**Heinz Ludwig, M.D.  
Division of Hematology/Oncology  
University of Vienna, Austria**



VIENNA

# Background

- **Anemia is a serious side effect of cancer and its cancer treatment**
- **Lack of data defining prevalence and incidence of anemia in various cancer types may explain inadequate management**

# European Cancer Anaemia Survey (ECAS)

- Designed to establish comprehensive database to evaluate issues surrounding cancer-related anemia:
  - prevalence and incidence
  - risk factors for development
  - relationship with WHO performance status
  - anemia treatment patterns

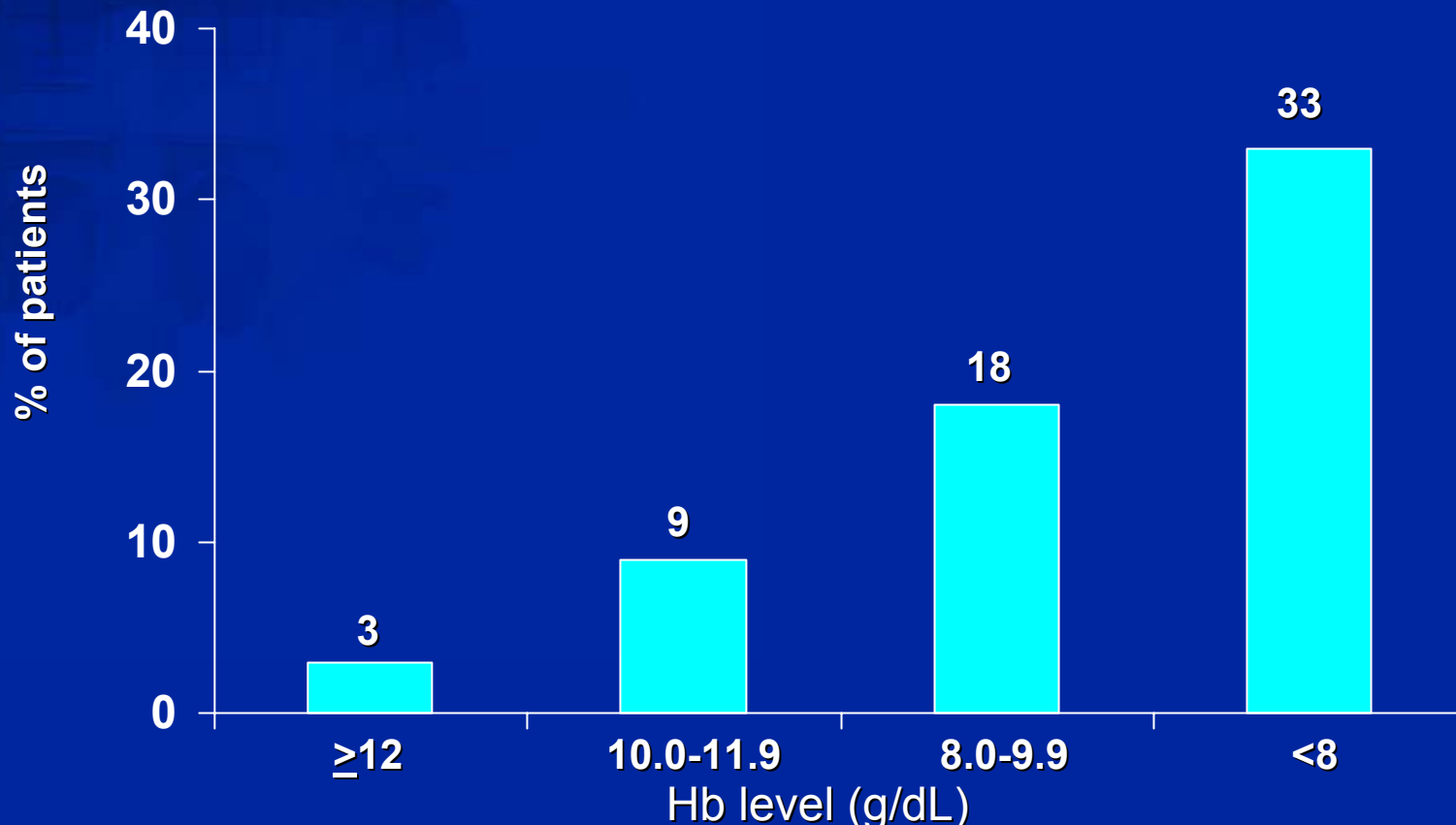
# ECAS—Focus on Hematologic Malignancies (HM)

- Between January and July 2001, ECAS enrolled 3,010 patients with HM at 748 centers in 24 European countries
- Patients followed for up to 6 months
- Data collected included:
  - demographics
  - hemoglobin (Hb) levels and other lab values
  - performance status
  - cancer treatment
  - anemia treatment

# ECAS—Enrollment Status

<b>Status</b>	<b>% of patients anemic</b>
<b>Newly-diagnosed</b>	<b>50</b>
<b>Persistent/recurrent disease</b>	<b>61</b>
<b>Remission</b>	<b>41</b>
<b>Chemotherapy</b>	<b>58</b>
<b>Radiotherapy</b>	<b>44</b>
<b>Chemotherapy + radiotherapy</b>	<b>74</b>
<b>No therapy</b>	<b>46</b>

# ECAS—Impaired Performance Status (PS) by Hb At Enrollment

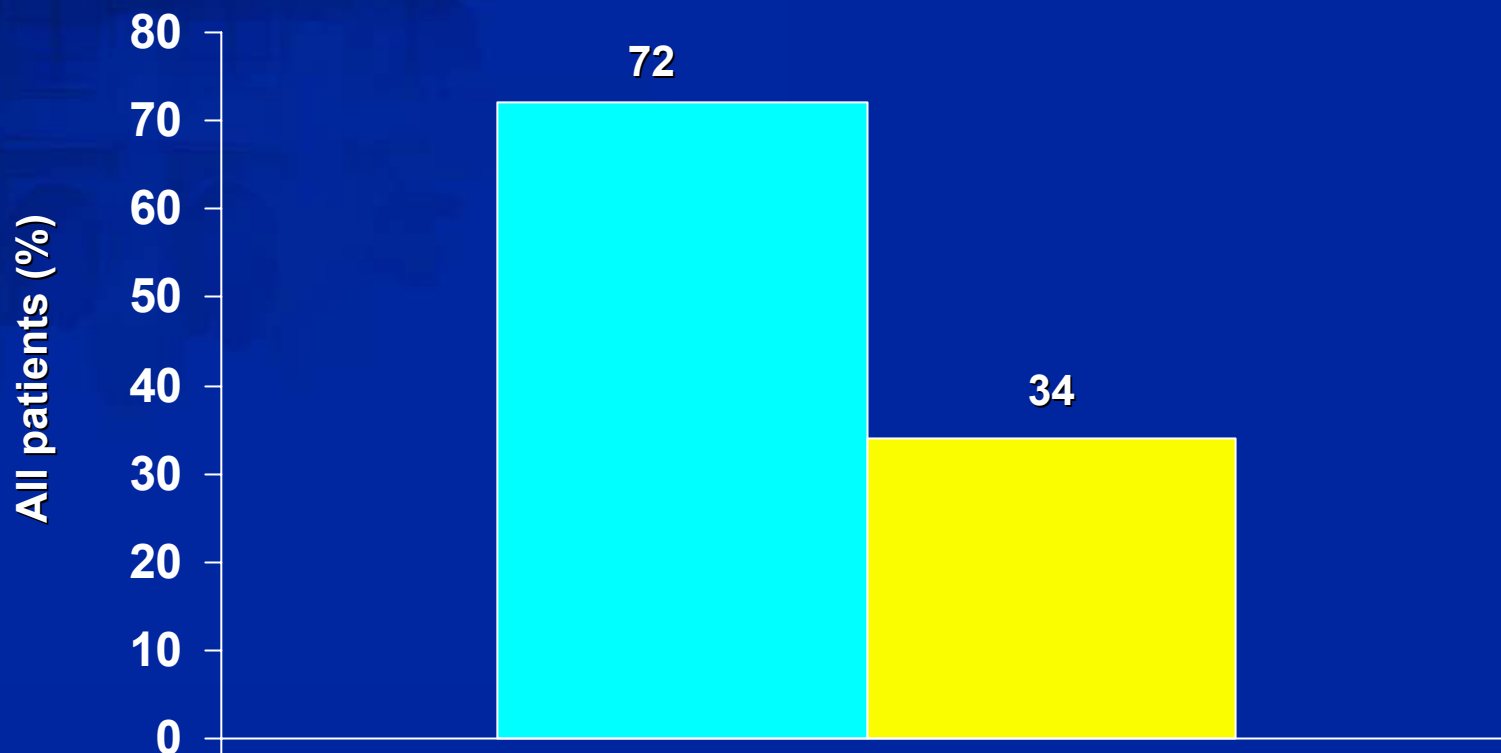


$p < .001$  for correlation between PS and lower Hb levels at enrollment  
Impaired functional status is defined as WHO scores 3-4



# ECAS—Patients Ever Anemic During 6-Months

- Ever anemic
- Ever treated for anemia



Data from 2,780 pts available for analysis at 6-months  
Anemia treatment initiated at very low Hb level (8.8 g/dL)

# Conclusions

- High prevalence of anemia among patients with HM regardless of disease status or treatment status
- Large number of HM patients with anemia are not treated despite known significant correlation between anemia and poor performance status
- Education is needed to ensure that anemia is recognized and treated